

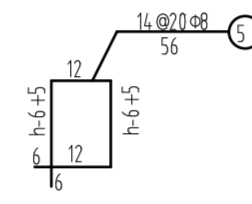
检查井卸荷板面积8.72

C30混凝土 体积:8.72×h

8.72×0.18=1.570

0.888kg/m Φ12 168.51+9.55=178.06

0.395kg/m Φ8 2.56 +2.765 =5.33



3.72×0.15=0.558

检查井卸荷板面积3.72

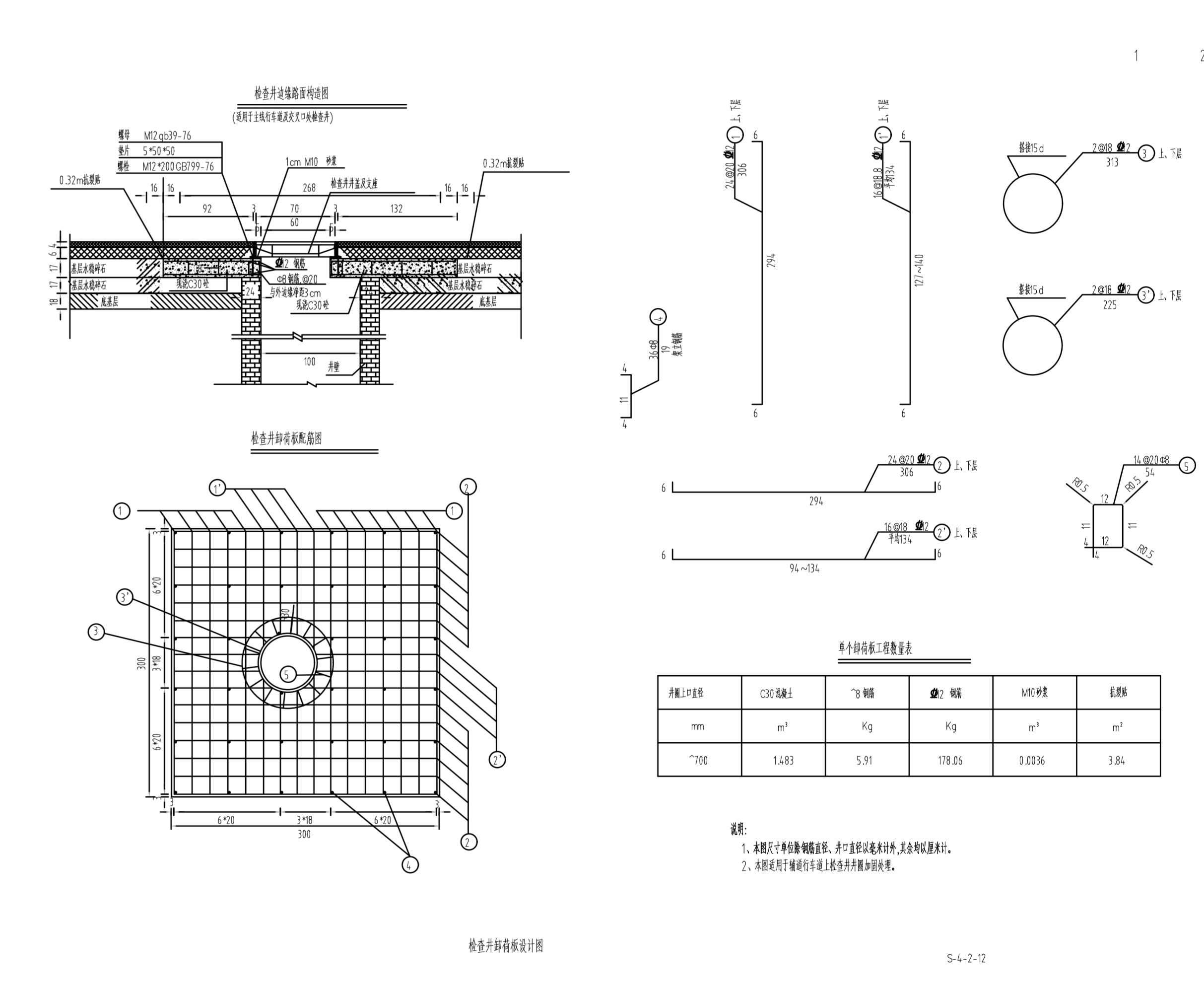
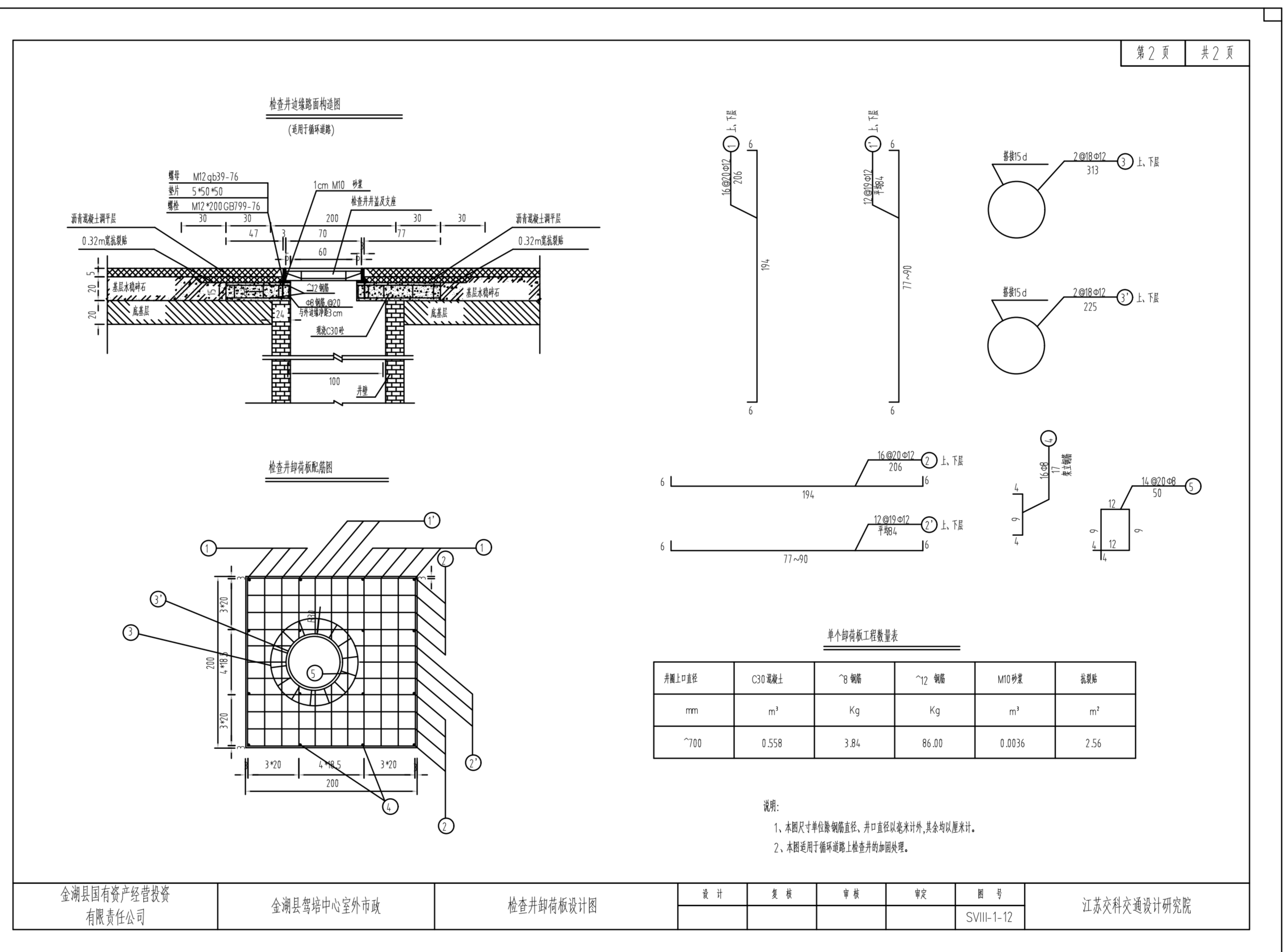
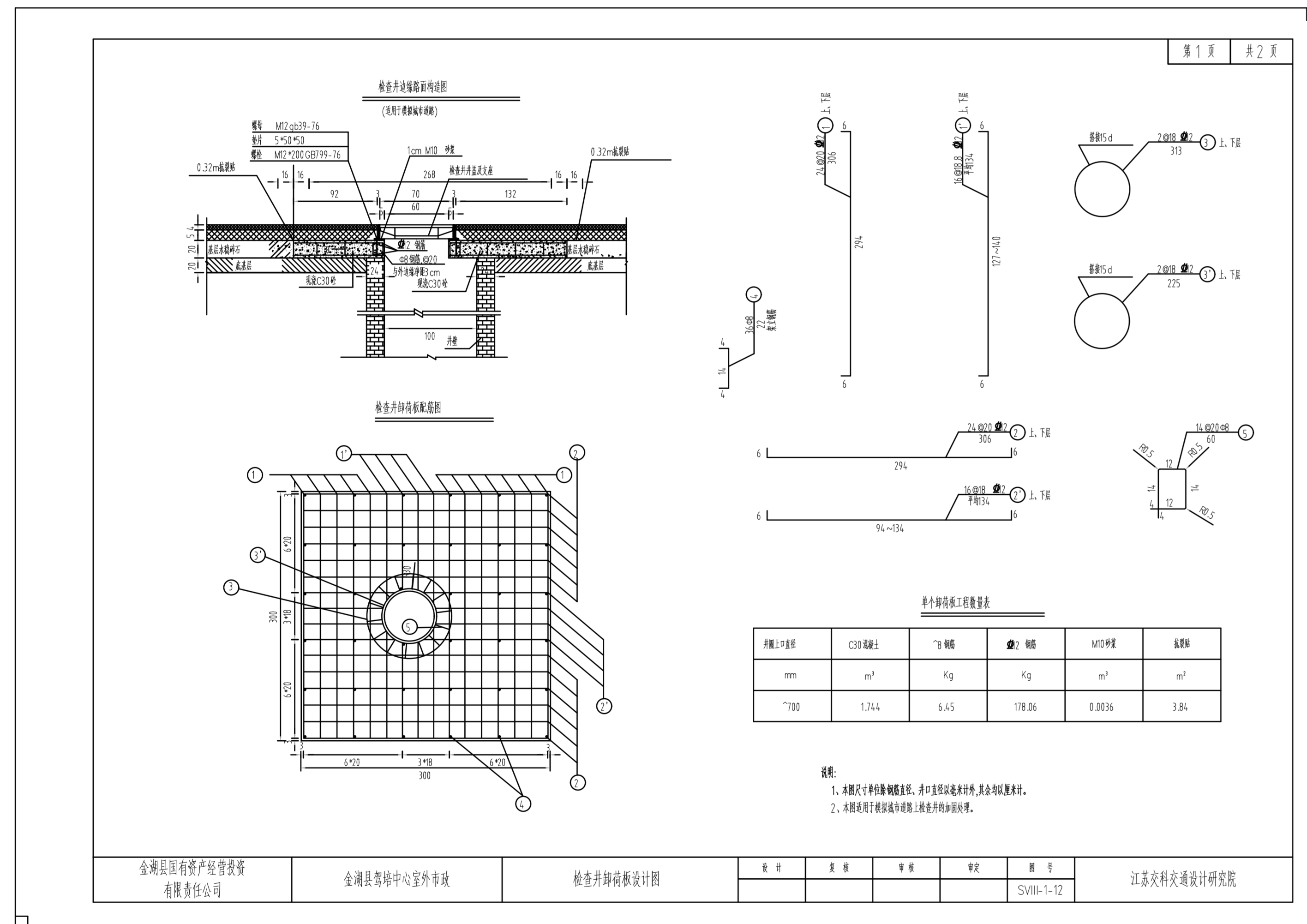
C30混凝土 体积:3.72×h

3.72×0.15 = 0.558

Φ12 (16×206 +12×84 +2×313 +2×225 +16×206 +12×84) ×0.888/100 = 86.0

Φ8 1.07 +2.77 = 3.84

检查井卸荷板设计图



材料名称	Φ8 钢筋	Φ12 钢筋	M10砂浆	油漆
单位	Kg	Kg	m <sup>3</sup>	m <sup>2</sup>
4.3个	29.99	765.58	0.140	16.32