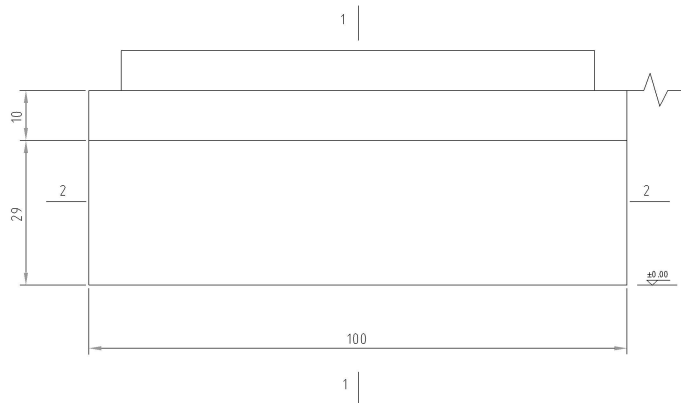
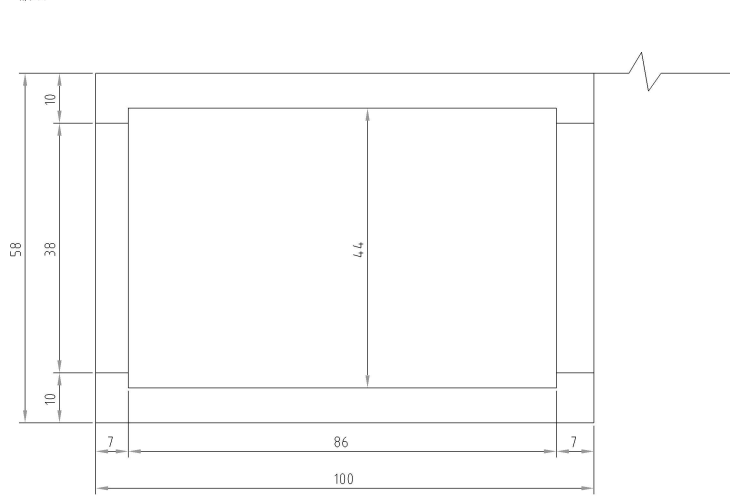


正面图

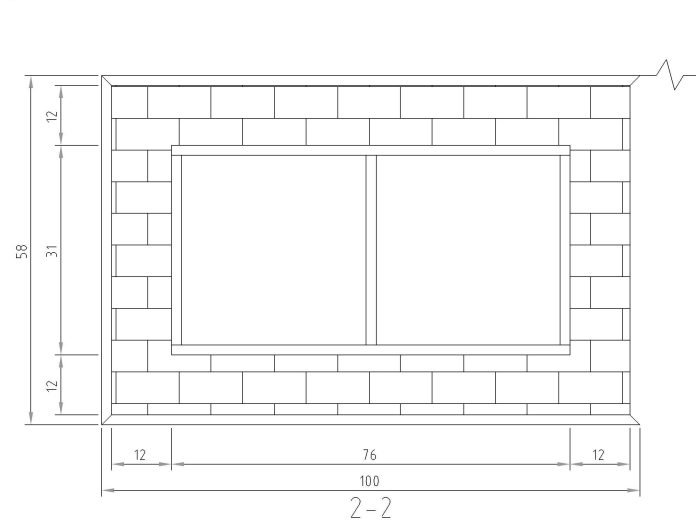


- 1、盖板660\*440\*(60-80)mm,金属中置,可见面表面,转角倒角2mm
- 2、盖板高度100\*100mm,金属中置,可见面表面,转角倒角2mm,水泥砂浆粘接
- 3、衬墙材料:18mm厚A级中置,可见面表面,倒角,水泥砂浆粘接
- 4、内衬防腐板:镀锌,厚度:15mm,穿孔直径5mm,可见面表面,水泥砂浆粘接
- 5、120厚M10种植,通缝内填充水泥砂浆
- 6、厚度:10cmC15混凝土

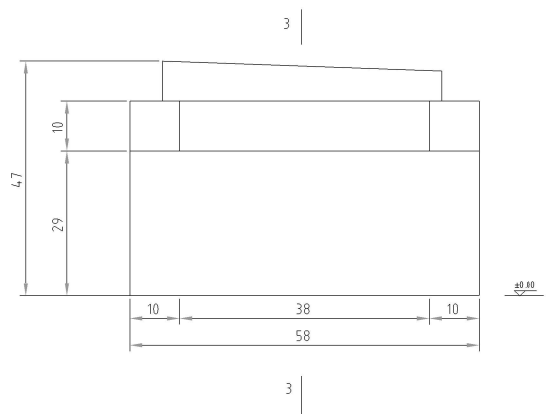
俯视图



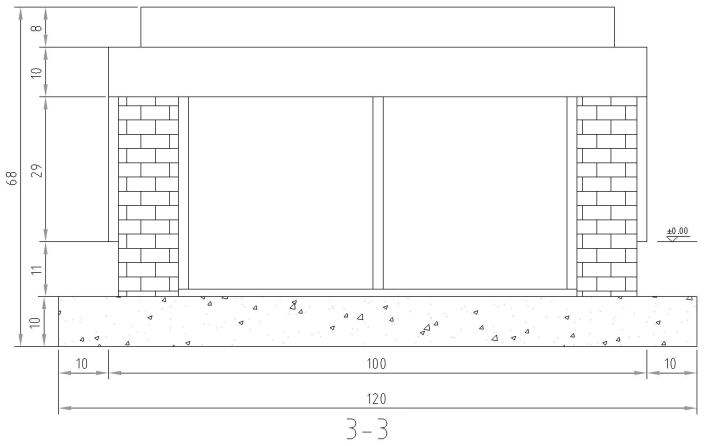
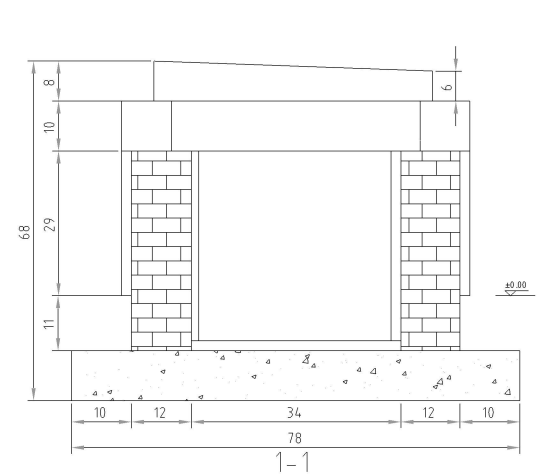
剖面图



侧面图



剖面图



1基穴共计十二排,每排基穴相错,每个基穴尺寸为100\*58cm